

RX822-A1 3264 Approx . 1920 Sq. Ft.

Chestnut

S = Std. 4" staggered cabinet / opt 12" staggered

* = Opt. 12" staggered overhead cabinet.

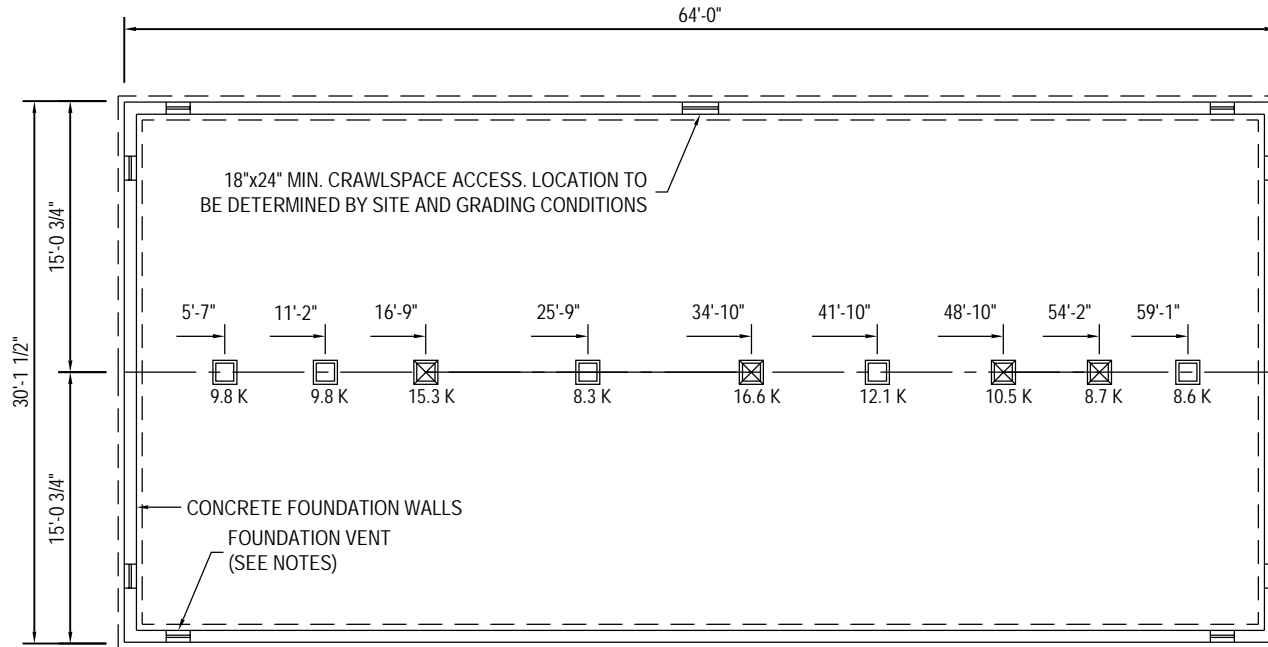
M48 = Opt. 48" Millennia lav base

Note: Because of varying state requirements and optional equipment some or all of the utility locations might change per floor plan (ie; furnaces, w/h, stairwell). Consult your sales representative for exact specifications.

FOOTING SIZE BASED ON 2500 PSF	
FOOTING SIZE	SIZE MAX. LOAD (LBS.)
16"x16"x6"	4.3K
20"x20"x8"	6.7K
24"x24"x10"	9.6K
30"x30"x12"	14.8K
36"x36"x14"	20.7K

**COLUMNS & FOOTINGS
MUST BE RATED TO
MEET THE CENTER
LINE LOADS LISTED**

GROUND SNOW LOAD
**40
PSF**
BALANCED ROOF LIVE LOAD: XX PSF



- 2X10 OR TRUSS FLOOR NOTES -

1. FOUNDATION LAYOUT IS APPLICABLE TO NOTED MAXIMUM SNOW LOADING AND MINIMUM SOIL BEARING PRESSURE. REFER TO INSTALLATION MANUAL FOR OTHER APPLICABLE INFORMATION. CONSULT LOCAL OFFICIALS AND THE APPLICABLE LOCAL CODES FOR OTHER REQUIREMENTS (I.E. DRAINAGE, DAMP-PROFFING, BACKFILL SUPPORT, ETC.).
2. WIDTH DIMENSIONS SHOWN INCLUDE A 3/4" ALLOWANCE PER HOME SECTION FOR HOMES WITH FACTORY-INSTALLED O.S.B. ON THE MARRIAGE WALL MATE LINE. THIS ALLOWANCE TAKES INTO ACCOUNT THE 7/16" O.S.B. MATERIAL INSTALLED ON EACH MARRIAGE WALL PLUS ALLOWANCE DUE TO OTHER FACTORS. IF HOME DOES NOT INCLUDE O.S.B. ON THE MARRIAGE WALL MATE LINE, FOUNDATION WIDTH IS TO BE SIZED EQUAL TO ACTUAL MANUFACTURED FLOOR WIDTH. LESSER DIMENSION, IF SHOWN, INDICATES ACTUAL FLOOR WIDTH. THESE DIMENSIONS DO NOT ALLOW FOR ANY VARIANCE THAT MAY OCCUR IN SITE INSTALLATION SUCH AS GAPPING, OFF CENTER SET OR OTHER FIELD-ENCOUNTERED VARIABLES. ANY ADJUSTMENTS NEEDED IN FOUNDATION WIDTH DUE TO SUCH VARIANCES ARE AT THE DISCRETION OF THE INSTALLER.
3. FOR DEVIATIONS &/OR OTHER FOUNDATION DESIGNS CONSULT A LOCAL PROFESSIONAL ENGINEER & YOUR LOCAL BUILDING OFFICIAL.
4. SILL PLATE FASTENING TO BE PER INSTALLATION MANUAL AND/OR LOCAL CODES. SILL FASTENING REQUIREMENT IS PER APPLICABLE WIND SPEED AND SEISMIC ZONES. SEE YOUR HOME DATA PLATE FOR APPLICABLE ZONES.
5. CONCRETE COMPRESSIVE STRENGTH (FC): 2500 PSI MINIMUM.
6. CENTERLINE LINE SUPPORTS AND SPACING ARE BASED ON (2) 2X10's SPF#2 ON EACH HALF (4-2X10'S TOTAL).
7. SPACE MUST BE VENTILATED PER IRC 408.2 (1 SQ. FT. PER EACH 150 SQ FT OF FOUNDATION AREA). VENTILATION IS NOT REQUIRED WITH CONDITIONED AIR. REFER TO IRC 408.3 FOR REQUIREMENTS.
8. FOUNDATION CONSTRUCTION AND TIE DOWN REQUIREMENTS FOR HOMES LOCATED IN 100 MPH OR LESS WIND ZONES MAY USE IRC GUIDELINES.

Builder: Commodore Homes of Indiana

Title: 3264
Foundation

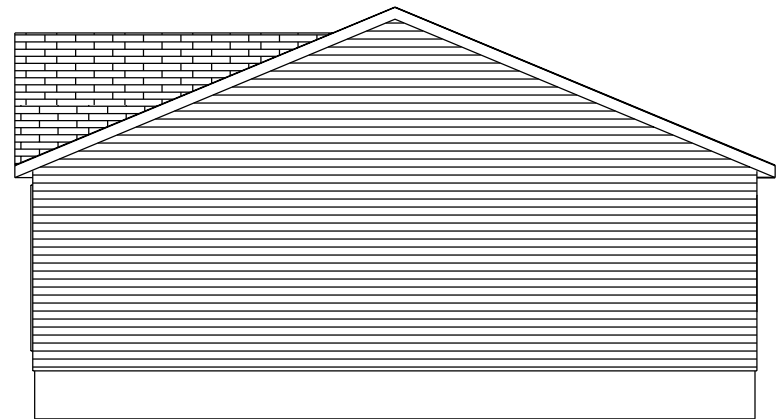
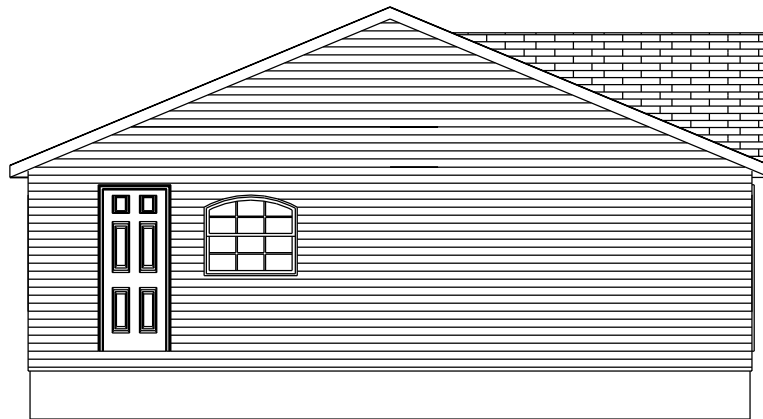
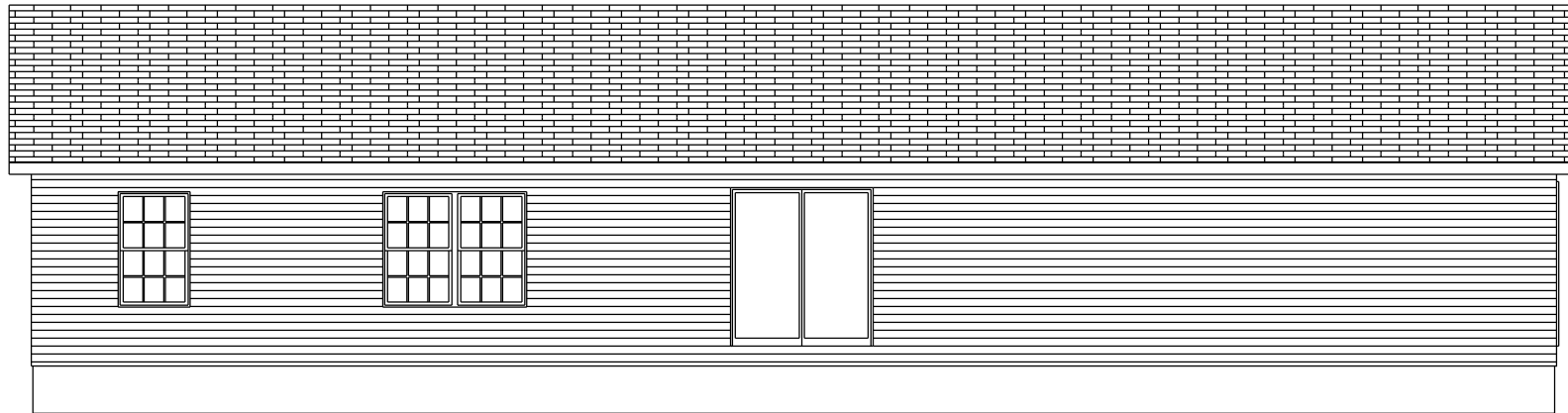
Revisions	
Date	Number

Scale: 3/32" = 1'-0"
Drawn By: JS

Date: 2/8/2010
Reference: ###

Cust: -
Dir: -
S/N: .

Model/Eng. No.:
RX822-A1
Pg.:



Builder:
Commodore Homes of Indiana

Title: 3264
Elevation

Revisions			
Date	Number		

Scale:
1/8" = 1'-0"
Drawn By:
JS

Date:
2/8/2010
Reference:
####

Cust: -
Dir: -
S/N: .

Model/Eng. No.:
RX822-A1
Pg.: